

# Top Shelf

The Newsletter of the Robert W. Woodruff Library  
of the Atlanta University Center

March 2009

Volume 4, No. 2



## Phase I of Woodruff Library Renovation Begins in May, Library Closed to the Public May 11-31

**H**ave you heard? We're renovating the Woodruff Library! That's right, at the conclusion of spring semester classes in May,

begin its first major renovation since opening in 1982.

Phase I of the renovation will begin with the service, study and stack areas on the Library's Main Level. During this phase of construction, circulation, information and research consultation services will be relocated to the Lower Level "Quiet Study Room."

To minimize service disruption and inconvenience to our RWWL users during relocation activities, the Library will be closed to the public from May 11-31.

**NOTE: Users needing to clear their accounts during the closure may do so from 9 AM – 5 PM, Monday, May 11-**

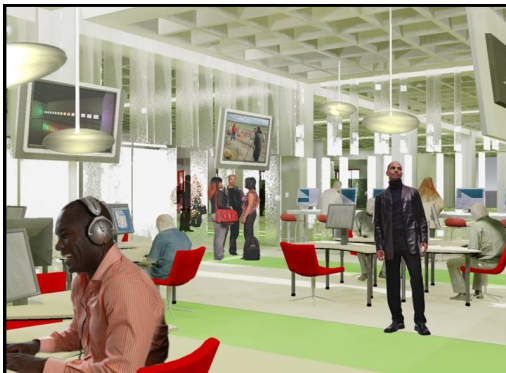
**Friday, May 15, in the Library's Atrium.**

**RWWL will reopen to the public Monday, June 1** with service operations in the temporary location (Quiet Study Room) and collections accessible on the Upper Level.

The "New Woodruff" will feature a totally redesigned Main Level Learning Commons, with Media Creation & Presentation Center, more collaborative study rooms, café, multipurpose classrooms, and after hours study area.

There also will be significant enhancements to the Upper Level Archives & Special Collections area and a new Graduate Study Suite and redesigned Reading Room Lower Level.

Other expected service changes are listed below:



Conceptual rendering of Library's new Media Creation & Presentation Center (Does not represent final design)

Courtesy of: Shepley, Bulfinch, Richardson & Abbott

the Robert W. Woodruff Library of the Atlanta University Center will

### LIBRARY SERVICE CHANGES: APRIL 2009-NOVEMBER 2009

SPRING SEMESTER 2009	
SERVICE CHANGE	EXPECTED BEGINNING/ENDING DATES
Exhibition Hall Reservations Temporarily Suspended	April 1, 2009-March 2010
Library Closed to Public	May 11-May 31, 2009
Library Entrance Moves to Rear of Building	May 11-November 2009
SUMMER SEMESTER 2009	
Library Service, Public Computer Access Move to Lower Level Quiet Study Room	June 1-November 2009
Main & Lower Level Collections Relocated	June 1-November 2009
Main & Lower Level Group Study Room Reservations Temporarily Suspended	June 1-December 2009

## Library's "Transformation Station" Furniture Showcase A Hit!



From Feb.17-March 6, AUC students evaluated the different "Transformation Station" furniture options and provided written feedback.

From February 17-March 6, the Robert W. Woodruff Library (RWWL) of the Atlanta University Center (AUC) presented one of the first tangible signs of interior

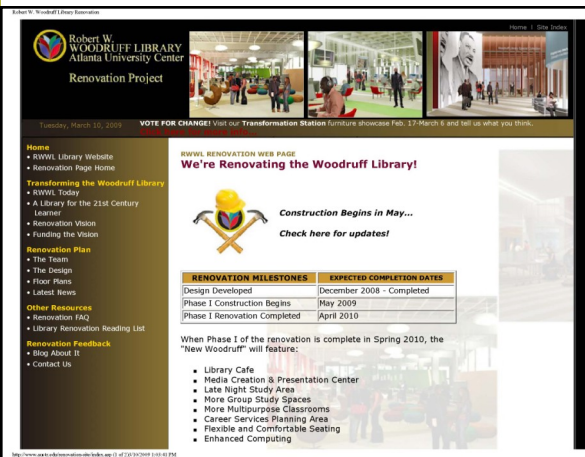
changes to come — a display of 30 furniture options for AUC student feedback dubbed "Transformation Station." During the three-week furniture showcase, AUC students, faculty and staff were asked to evalu-

ate the displayed items for design, function and how they support activity within the Woodruff Library.

Nearly 150 participants completed online and hard copy surveys, as well as provided 250 verbatim responses on flipcharts. AUC students were involved in the planning and implementation of the event, providing input on everything from the items selected for the display, to the surveys used to evaluate them.

In addition, the Library's Student Advisory Council co-sponsored a February 16 "Pre-Launch" reception for their fellow student opinion leaders (SGA and Class Council Presidents). During the "Pre-Launch," SAC members from the four AUC institutions provided a student-to-student orientation on the functionality and features of the Transformation Station furniture items.

## NEW FOR YOU! RWWL Renovation Web Site and Blog



Home page of the Library's new Renovation web site

Continuing its commitment to timely renovation communications, The Robert W. Woodruff Library recently launched a new renovation web site.

Located at <http://www.auctr.edu/renovation-site/index.asp>, the web site will feature all of the latest renovation news and information, including *library service changes* (timeline). In addition, viewers will get a complete overview of the renovation

planning and development process and learn more about the design and construction team selected by RWWL to create and build the "New Woodruff."

There's also information on how you, our AUC users, can submit questions and comments about renovation activities as they unfold.

Click on the "Renovation Update"

hard hat on the RWWL home page ([www.auctr.edu](http://www.auctr.edu)) and you'll find:

- ◆ Renovation blog for "real-time," interactive communications (web streams, photos and written content) throughout the duration of the year-long construction project
- ◆ Latest renovation news and events
- ◆ Contact information for renovation-related questions or comments
- ◆ Architectural drawings and conceptual images

- ◆ Design and construction team background information
- ◆ Renovation planning and development overviews

AUC users can also submit questions and provide feedback on construction activities by email to: [libraryrenovation@auctr.edu](mailto:libraryrenovation@auctr.edu).

### Top Shelf

Published four times a year for library users



Robert W. WOODRUFF LIBRARY  
Atlanta University Center

111 James P. Brawley Drive, SW  
Atlanta, Georgia 30314  
Phone: 404-978-2000  
Fax: 404-577-5158  
[www.auctr.edu](http://www.auctr.edu)

CEO/Library Director  
Loretta Parham

Editor & Copywriter  
Adrian B. Carver  
E-mail: [acarver@auctr.edu](mailto:acarver@auctr.edu)